

THE MARSHALL

STATESMAN SERIES
3626 SQ FT



Elevation A



Elevation A (with stone)



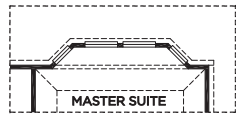
Elevation B



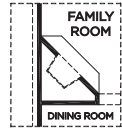
Elevation B (with stone)

For more information, visit www.mckinleyhouston.com

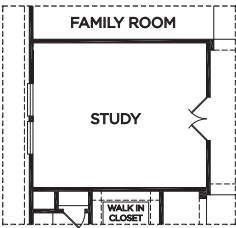
©2024 McKinley Homes US, LLC. Plans, features, pricing and availability are subject to change without prior notice or obligation and may vary by elevation. Information including square footage is approximate and subject to change without prior notice or obligations. Images are an artist's conceptions and not a guarantee of final specifications. Please see our sales professional for details and additional information.



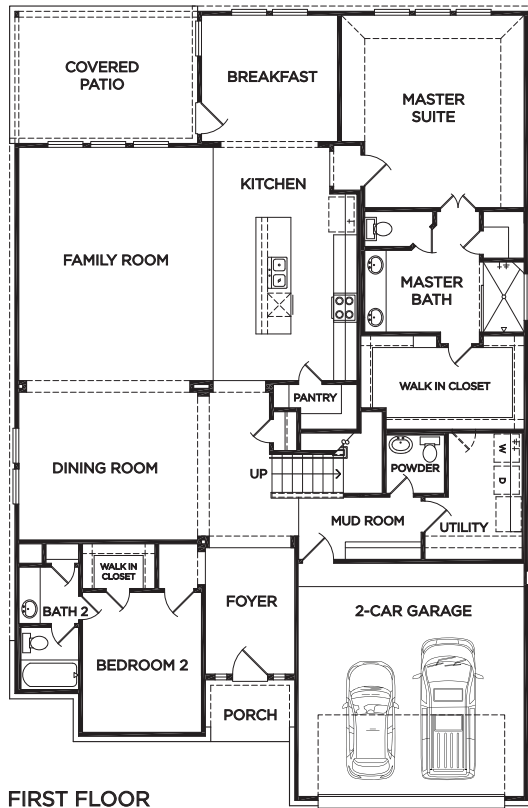
OPTIONAL MASTER BAY WINDOW



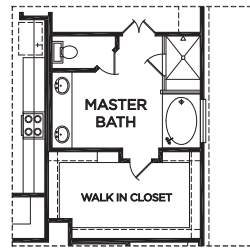
OPTIONAL FIREPLACE



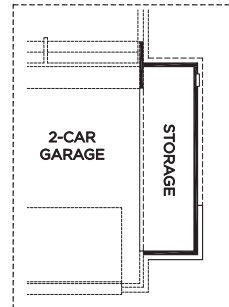
OPTIONAL STUDY



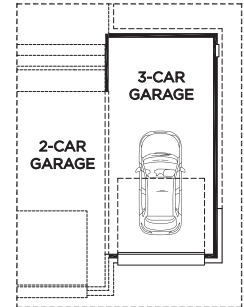
FIRST FLOOR



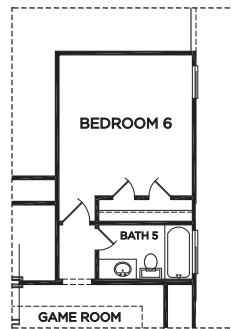
OPTIONAL SEPARATE MASTER BATH TUB & SHOWER



OPTIONAL 5 FT. EXTENDED GARAGE



OPTIONAL 3-CAR GARAGE



OPTIONAL BEDROOM 6

THE MARSHALL

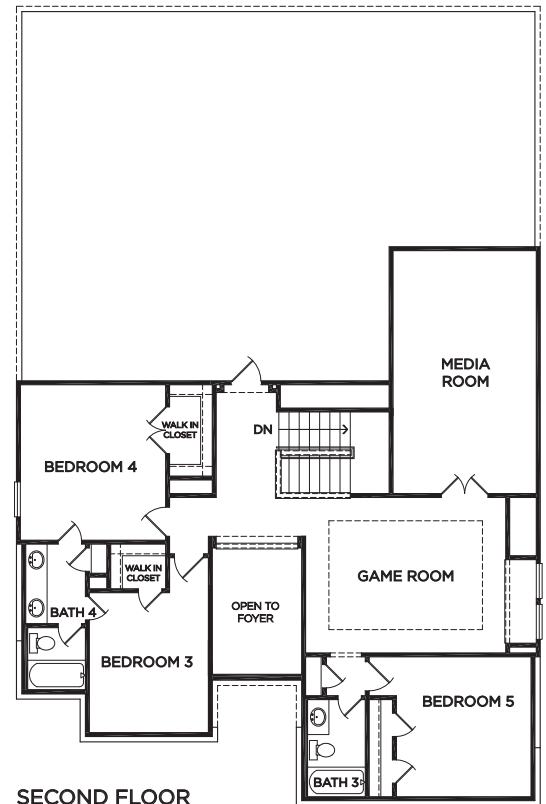
Approximate Square Footage: 3626

5 Bedrooms / 4.5 Baths

Optional Bedroom 6 with Bath 5

Optional Study

Optional 3-Car Garage



SECOND FLOOR

For more information, visit www.mckinleyhouston.com

©2024 McKinley Homes US, LLC. Plans, features, pricing and availability are subject to change without prior notice or obligation and may vary by elevation. Information including square footage is approximate and subject to change without prior notice or obligations. Images are an artist's conceptions and not a guarantee of final specifications. Please see our sales professional for details and additional information.